

Engine	Yuchai YC4A105Z-T20
Gross Power	75 kW (101 hp) @ 2,200 rpm
Net Power	72 kW (98 hp) @ 2,200 rpm
Maximum Speed	44 km/h
Standard Loader Bucket Capacity Standard	1 m ³
Backhoe Bucket Capacity	0.20 m ³
Operating Weight	8,300 kg

775A BACKHOE LOADER



TOUGH WORLD. TOUGH EQUIPMENT.

775A SPECIFICATIONS >>>

ENGINE	
Emission Regulation	Tier 2 / Stage II
Make	Yuchai
Model	YC4A105Z-T20
Gross Power	75 kW (101 hp) @ 2,200 rpm
Net Power	72 kW (98 hp) @ 2,200 rpm
Peak Torque	400 N · m @ 1,500 rpm
Displacement	4.836 L

ELECTRICAL SYSTEM	
System Voltage	12 V
Battery Rating	95 amp - hr

DRIVE TRAIN	
Number of Drive Wheels	4 wd
1st Maximum Speed, fwd/rev	9.8 km/h
2nd Maximum Speed, fwd/rev	17.5 km/h
3rd Maximum Speed, fwd/rev	28 km/h
4nd Maximum Speed, fwd/rev	44 km/h
Turning Radius Outside of Front Tire	4,800 mm

BRAKES	
Service Brake Type	caliper
Service Brake Actuation	air over hydraulic

TIRES	
Front Tire Size	12.5/80-18 14RP
Rear Tire Size	16/70-24

HYDRAULIC SYSTEM	
Circuit Type	open
Total Flow	117 L/min
Main Relief Pressure	21.5 MPa
Pump Type	gear pump
Steering Type	priority valve

OPERATING WEIGHTS	
Operating Weight	8,300 kg

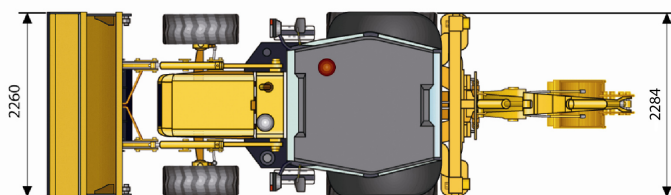
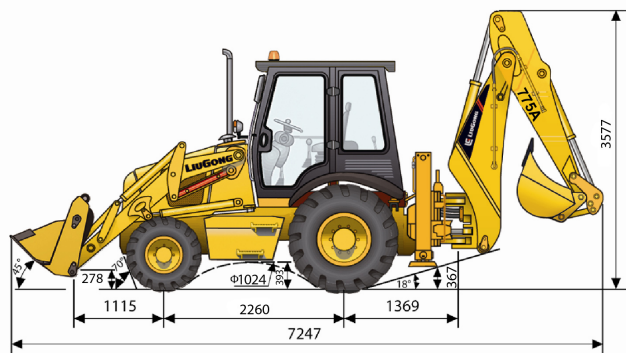
LOADER PERFORMANCE	
Standard Bucket Type (referenced)	general load bucket
Standard Bucket Heaped Capacity ISO (referenced)	1 m ³

Standard Bucket Width (referenced)	2,260 mm
Lift Capacity at Full Height	33.2 kN
Bucket Breakout Force	59.6 kN
Maximum Dump Angle at Full Height	45°
Dump Height at Maximum Angle	2,691 mm
Dump Reach at Full Height Discharge	713 mm
Boom Lift Capacity, end, at ground	40.4kN
Maximum Dig Depth	59 mm

BACKHOE PERFORMANCE	
Standard Bucket Type (referenced)	general bucket 0.20 m ³
Standard Bucket Heaped Capacity ISO (referenced)	0.20 m ³
Standard Bucket Width (referenced)	610 mm
Maximum Dig Depth	4,440 mm
Reach From Swing Pivot at Ground	5,443 mm
Turning Angle of Bucket	182°
Bucket Digging Force	58.2 kN
Dipper Digging Force, standard stick	37.5 kN
Loading Height	3,680 mm
Loading Reach from Swing Pivot	3,007 mm

SERVICE CAPACITIES	
Fuel Tank	142 L
Engine Oil	12 L
Cooling System	23 L
Hydraulic Reservoir	130 L
Hydraulic System Total	170 L
Transmission and Torque Converter	38 L
Axle, front	6.2 L
Axle, rear	15 L

STANDARD EQUIPMENT	OPTIONAL EQUIPMENT
Yuchai engine	Rotary Beacon
Shantui Transmission	Hydraulic shear
Enclosed Cab, with AC	Vibratory Tamper
Auxiliary Hydraulic Kit	Hydraulic Hammer
Feicheng Rear Drive Axles	4 in 1 Load Bucket 1.0 m ³
Chuangjie Front Drive Axles	
Boom Interlock	
General load Bucket 1 m ³	
Backhoe bucket 0.20 m ³	



Unit: mm

Guangxi Liugong Machinery Co., Ltd.

No. 1 Liutai Road, Liuzhou, Guangxi 545007, PR China
T: +86 772 3886124 E: overseas@liugong.com
www.liugong.com

05/2014 Designed by LiuGong

Specifications and designs are subject to change without notice. Machines shown may include optional equipment.