

Engine	Chongqing Cummins
Gross Power	257 kW (350 hp) @ 2,000 rpm
Net Power	235 kW (320 hp) @ 2,000 rpm
Maximum Torque	1,509 N • m
Blade Capacity	10.4 m ³
Operating Weight	38,200 kg

B320 BULLDOZER

 **LIUGONG**



TOUGH WORLD. TOUGH EQUIPMENT.

B320 SPECIFICATIONS >>>

ENGINE

Emission Regulation	Tier 1 / Stage I
Make	Chongqing Cummins
Model	NT855C360S10
Gross Power	257 kW (350 hp) @ 2,000 rpm
Net Power	235 kW (320 hp) @ 2,000 rpm
Peak Torque	1,509 N • m @ 2,000 rpm
Number of Cylinders	6
Aspiration	Turbocharged
Displacement	14 L

TRANSMISSION

Transmission Type	Powershift
Maximum Travel Speed, fwd	11.8 km/h
Maximum Travel Speed, rev	13.7 km/h
Number of Speeds, fwd	3
Number of Speeds, rev	3

ELECTRICAL SYSTEM

System Voltage	24 V
----------------	------

UNDERCARRIAGE

Shoe Width	560 mm
Number of Shoes per Side	41
Number of Upper Rollers per Side	2
Number of Bottom Rollers per Side	7
Shoe Ground Pressure	105 kPa
Track on Ground	3,150 mm

DIMENSIONS

Overall Length	8,995 mm
Height to Top of Cab	3,590 mm
Ground Clearance	500 mm

OPERATINGWEIGHTS (with single shank ripper)

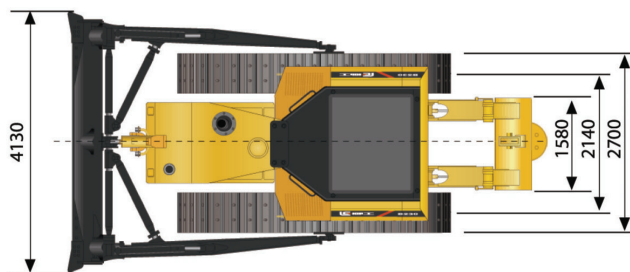
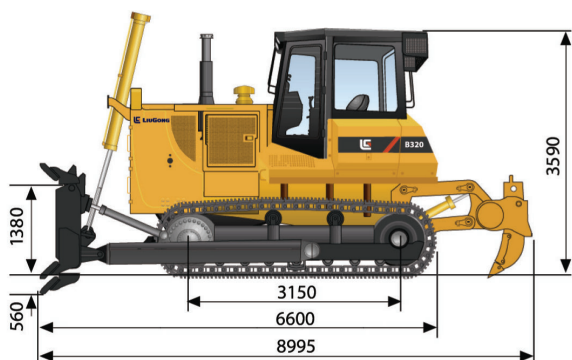
Operating Weight	38,200 kg
------------------	-----------

BLADE PERFORMANCE

Blade Type (referenced)	straight
Blade Capacity (referenced)	10.4 m ³
Blade Width	4,130 mm
Blade Height	1,529 mm
Blade Depth below Ground	560 mm
Blade Lift above Ground	1,380 mm
Blade Tilt	1,000 mm

SERVICE CAPACITIES

Fuel Tank	600 L
Engine Oil	47 L
Cooling System	85 L
Hydraulic System Total	340 L
Transmission and Torque Converter	185 L
Final Drives, each	110 L



Unit: mm

Guangxi Liugong Machinery Co., Ltd.

No. 1 Liutai Road, Liuzhou, Guangxi 545007, PR China
T: +86 772 3886124 E: overseas@liugong.com
www.liugong.com

05/2014 Designed by LiuGong

Specifications and designs are subject to change without notice. Machines shown may include optional equipment.