

Chassis Model	LIUGONG CLG5321J
Emission Stage	Euro III
Engine Rated Power	213/2,100 kW/(r/min)
Max. Rated Lifting Load	25 t
Max. Lifting Height of Main Boom	40 m
Max. Travel Speed	80 km/h
Outrigger Longitudinal/Transversal Span	5,250/6,000 mm

TC250 TRUCK CRANE



TOUGH WORLD. TOUGH EQUIPMENT.

TC250 SPECIFICATIONS >>>

CHASSIS

Model Number	CLG5321JQZ25
Chassis Model	CLG5321J
Engine Model	ISLe290 30
Emission Regulation	EURO III
Engine Rated Power	213/2,100 kW/(r/min)
Engine Displacement	8.9 L
Driving Type	6X4
Wheelbase	4,535+1,350 mm
Max. Running Speed	80 km/h
Economic Fuel	35 L/100 km
Min. Turning Radius	10 m
Max. Grade Ability	28%
Approach/Departure Angle	19/13°
Tyre Type	11.00-20

DIMENSIONS & WEIGHT

Overall Length	12,250 mm
Overall Width	2,490 mm
Overall Height	3,365 mm
Overall Net Weight	32,205 kg

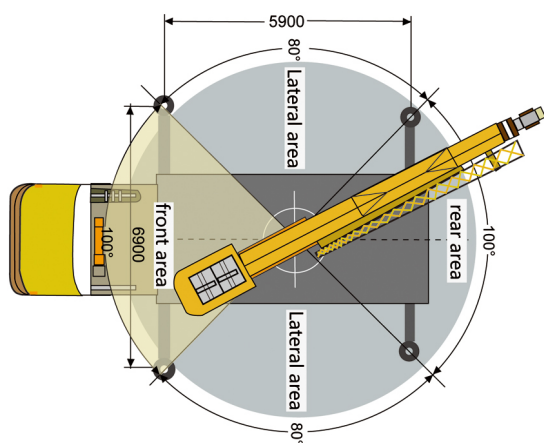
BOOM SYSTEM

Boom Type	5 unit
Slewing Range	270°
Height of Basic Boom	10.4 m
Max. Rated Lifting Torque of Basic Boom	995.5 KN • m
Max. Lifting Height of Main Boom	39.6 m
Max. Rated Lifting Torque of Booms Full Extended	560 kN • m
Max. Lifting Height of Jib	48.2 m
Outrigger Longitudinal Span	5,250 mm
Outrigger Transversal Span	6,000 mm

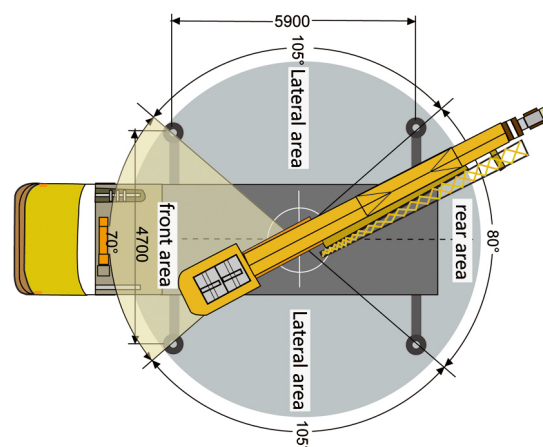
HYDRAULIC SYSTEM

Hydraulic System Type	open loop
Main Hydraulic Pump Type	CB-KpR63/50/32/08
Main Hydraulic Pump Displacement	63/50/32/08 ml/r
Main Hydraulic Motor Type	A6V80HA22FZ1055
System Working Pressure	22 MPa
Max. Slewing Speed	2.5 r/min
Max. Hoisting Speed	130 m/min
Max. Boom Telescoping Time	110/150 s
Max. Boom Elevating Time	65/135 s
Hydraulic Oil Tank Capacity	520 L

Diagram of Working Zone



Work Zone in Outriggers fully extended



Work Zone in Outriggers half extended