



# 777A Backhoe Loader



<b>Engine</b>	Weichai WP4G95E21
<b>Gross Power</b>	70 kW (95 hp) @ 2,200 rpm
<b>Net Power</b>	68 kW (92.5 hp) @ 2,200 rpm
<b>Maximum Speed</b>	36 km/h
<b>Standard Loader Bucket Capacity</b>	1 m <sup>3</sup>
<b>Standard Backhoe Bucket Capacity</b>	0.22 m <sup>3</sup>
<b>Operating Weight</b>	8,400 kg

# 777A Backhoe Loader



## ENGINE

Emission Regulation	Tier 2 / Stage II
Make	Weichai WP4G95E221
Gross Power	70 kW (95 hp) @ 2,200 rpm
Net Power	68 kW (92.5 hp) @ 2,200 rpm
Peak Torque	383 N · m @ 1,500 rpm
Displacement	4.5 L

## ELECTRICAL SYSTEM

System Voltage	12 V
Battery Rating	95 amp - hr

## DRIVE TRAIN

Number of Drive Wheels	2 wd / 4 wd
1 <sup>st</sup> Maximum Speed, fwd/rev	5.9 km/h
2 <sup>nd</sup> Maximum Speed, fwd/rev	10.7 km/h
3 <sup>rd</sup> Maximum Speed, fwd/rev	20.5 km/h
4 <sup>th</sup> Maximum Speed, fwd/rev	36 km/h
Turning Radius Outside of Front Tire	4,225 mm
Turning Radius Outside of Bucket	5,554 mm

## BRAKES

Service Brake Type	wet disc
Service Brake Actuation	air over hydraulic

## TIRES

Front Tire Size	14 - 17.5NHS - 14RPTLL - 2B
Rear Tire Size	19.5 L - 24 14PR TL R - 4

## HYDRAULIC SYSTEM

Circuit Type	open
Total Flow	143 L/min
Main Relief Pressure	24 MPa
Pump Type	tandem gear pump
Steering Type	priority valve

## OPERATING WEIGHTS

Operating Weight	8,400 kg
------------------	----------

## LOADER PERFORMANCE

Standard Bucket Type (referenced)	general load bucket 1 m <sup>3</sup>
Standard Bucket Heaped Capacity ISO (referenced)	1 m <sup>3</sup>
Standard Bucket Width (referenced)	2,260 mm
Lift Capacity at Full Height	33.2 kN
Bucket Breakout Force	59.6 kN
Maximum Dump Angle at Full Height	45°
Dump Height at Maximum Angle	2,691 mm
Dump Reach at Full Height Discharge	713 mm
Boom Lift Capacity, end, at ground	47.3 kN
Maximum Dig Depth	89 mm

## BACKHOE PERFORMANCE

Standard Bucket Type (referenced)	general bucket 0.22 m <sup>3</sup>
Standard Bucket Heaped Capacity ISO (referenced)	0.22 m <sup>3</sup>
Standard Bucket Width (referenced)	762 mm
Maximum Dig Depth	4,440 mm
Reach From Swing Pivot at Ground	5,433 mm
Turning Angle of Bucket	182°
Bucket Digging Force	58.2 kN
Dipper Digging Force, standard stick	37.5 kN
Loading Height	3,680 mm
Loading Reach from Swing Pivot	2,130 mm

## SERVICE CAPACITIES

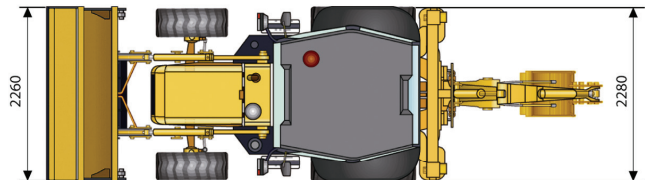
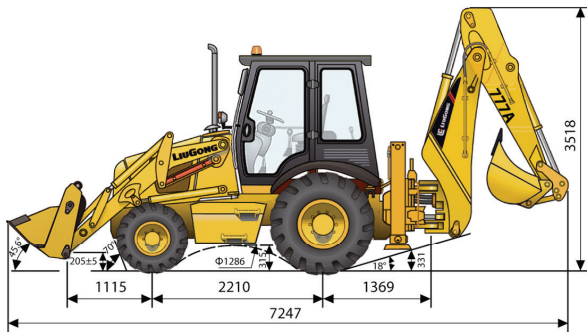
Fuel Tank	130 L
Engine Oil	13 L
Cooling System	15 L
Hydraulic Reservoir	130 L
Hydraulic System Total	170 L
Transmission and Torque Converter	16 L
Axle, front	6.9 L
Axle, rear	17.5 L

## STANDARD EQUIPMENT

Weichai WP4G95E221 Engine  
Carraro Transmission  
Open Cab, ROPS / FOPS  
Auxiliary Hydraulic Kit  
Carraro 4 x 2 Axles  
Boom Interlock  
General load Bucket 1 m<sup>3</sup>  
Seat belt

## OPTIONAL EQUIPMENT

Enclosed Cab, ROPS / FOPS, with AC  
Rotary Beacon  
Hydraulic shear  
Vibratory Tamper  
Hydraulic Hammer  
Carraro 4 x 4 Axles  
4 in 1 Load Bucket 1.3 m<sup>3</sup>  
Telescopic Boom



Unit: mm

**Guangxi Liugong Machinery Co., Ltd.**

No. 1 Liutai Road, Liuzhou, Guangxi 545007, PR China

T: +86 772 388 6124 E: overseas@liugong.com

[www.liugong.com](http://www.liugong.com)

09/2012 Designed by LiuGong

Specifications and designs are subject to change without notice. Machines shown may include optional equipment.