



922E Excavator



Engine	Cummins
Gross Power	127 kW (173 hp) @ 2,000 rpm
Net Power	112.9 kW (154 hp) @ 2,000 rpm
Maximum Digging Depth	6,630 mm
Standard Bucket Capacity	1.0 m ³
Operating Weight	22,400 kg

922E Excavator



ENGINE

Emission Regulation	Tier4 Interim / Stage IIIB
Make	Cummins
Gross Power	127 kW (173 hp) @ 2,000 rpm
Net Power	112.9 kW (154 hp) @ 2,000 rpm
Peak Torque	656 N · m @ 1,600 rpm
Number of Cylinders	6
Displacement	6.7 L

TRACK DRIVE

Maximum Travel Speed	5.5 km/h
Gradeability	70 %
Drawbar Pull	220 kN

UNDERCARRIAGE

Shoe Width	600 mm
Number of Shoes per Side	49
Number of Bottom Rollers per Side	8
Number of Upper Rollers per Side	2

HYDRAULIC SYSTEM

Main Pumps Total Flow	2x224 L/min
Relief Pressure, main	34.3 MPa
Relief Pressure, boost	37.3 MPa
Pilot Pump Flow	20 L/min

SWING SYSTEM

Swing Speed	12 rpm
-------------	--------

REFERENCE ARM

Arm Length	2,915 mm
Arm Breakout Force, normal, ISO	99 kN
Arm Breakout Force, boost, ISO	108 kN

WORKING RANGES

Maximum Dig Depth	6,630 mm
Reach at Ground Level	9,700 mm
Depth of 8' Level Bottom	6,420 mm
Maximum Dig Height	9,910 mm
Dump Height	7,140 mm
Maximum Dig Depth of Vertical Wall	5,180 mm

BUCKET PERFORMANCE

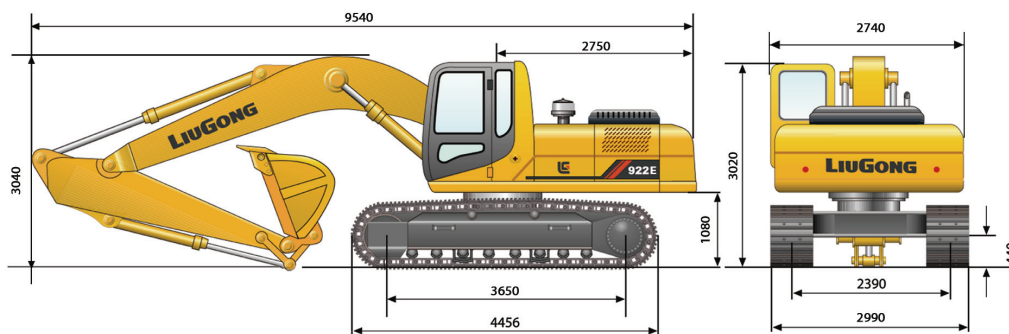
Standard Bucket Heaped Capacity (Referenced)	1.0 m ³
Minimum Heaped Capacity of Bucket Options	0.48 m ³
Maximum Heaped Capacity of Bucket Options	1.2 m ³
Bucket Breakout Force, normal, ISO	147 kN
Bucket Breakout Force, boost, ISO	160 kN

SERVICE CAPACITIES

Fuel Tank	420 L
Engine Oil	24 L
Cooling System	25 L
Hydraulic Reservoir	210 L
Hydraulic System Total	330 L

Bucket: SAE 1.0 m ³ , 780 kg Boom: 5,710 mm Arm: 2,915 mm Shoes: 600 mm Counterweight: 4,300 kg												
Lift Point Height									Max. Reach			
	3 m		4.5 m		6.0 m		7.5 m		Front	Side	m	
7.5 m	kg				※3,680	※3,680			※2,980	※2,980	6.4	
6.0 m	kg				※3,720	※3,720			※2,870	2,440	7.5	
4.5 m	kg				※4,320	3,630	※4,150	2,330	※3,050	1,980	8.2	
3.0 m	kg	※10,500	※10,500	※6,690	5,510	※5,280	3,370	4,180	2,210	※3,300	1,730	8.5
1.5 m	kg	※15,260	9,340	※8,740	4,940	5,910	3,100	4,040	2,080	3,230	1,610	8.6
0 m	kg	※16,830	8,890	9,290	4,590	5,680	2,900	3,920	1,970	3,290	1,630	8.4
-1.5 m	kg	※16,760	8,880	9,130	4,450	5,560	2,800	3,870	1,930	3,610	1,790	7.9
-3.0 m	kg	※15,690	9,050	9,170	4,490	5,570	2,810			4,370	2,200	7.1
-4.5 m	kg	※13,330	9,420	※9,040	4,680					6,420	3,290	5.7

1. ※ Indicates the load is limited by hydraulic capacity rather than tipping capacity.
2. The above rated loads are in compliance with ISO 10567 hydraulic excavator lift capacity rating standard. They do not exceed 87% of hydraulic lifting capacity or 75% tipping load.
3. Ratings at bucket lift hook.



Guangxi Liugong Machinery Co., Ltd.

No. 1 Liutai Road, Liuzhou, Guangxi 545007, PR China

T: +86 772 388 6124 E: overseas@liugong.com

www.liugong.com

Specifications and designs are subject to change without notice. Machines shown may include optional equipment.